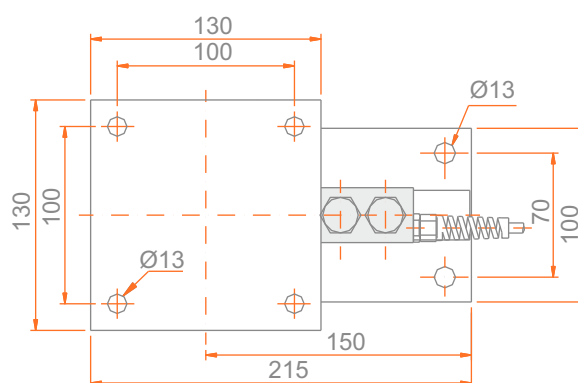
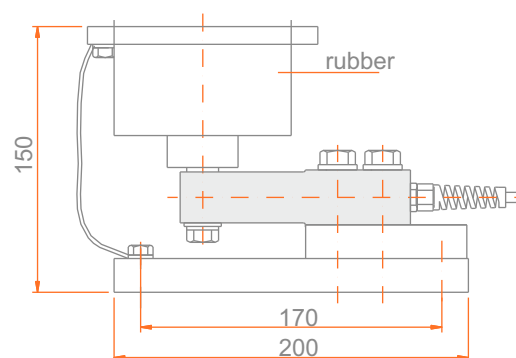
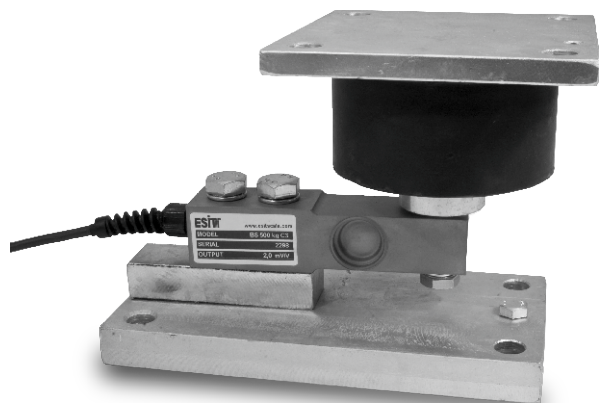


Type BS-ELT

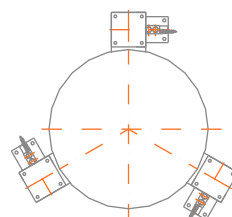
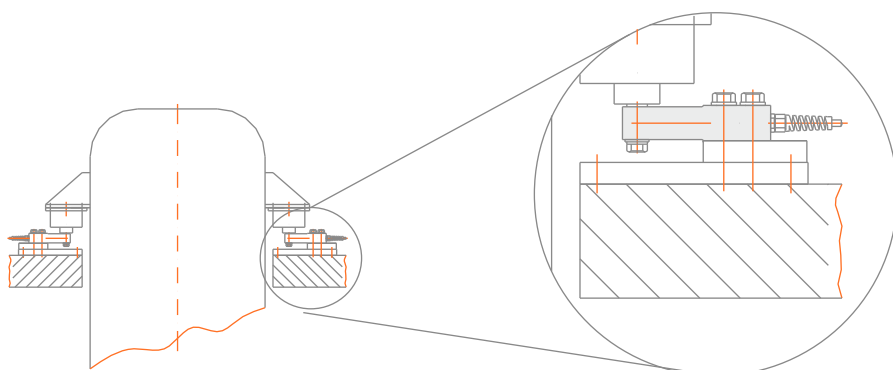
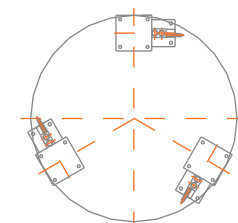
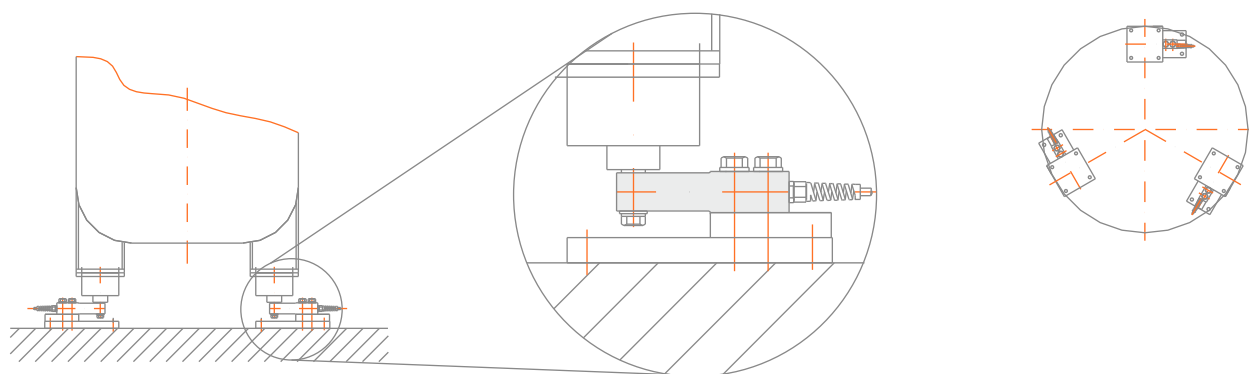
Elastomer Mounting Kit

(All dimensions are expressed in millimeters)



- Enables stable weighing in vibrating or shocking systems
- Eliminates problems arising from thermal expansion
- Protects load cell from shock loads
- Possesses grounding cable to protect load cell against leakage currents

Application Graphic



Esit reserves the right to modify, without prior notice, the products in accordance with technological developments.