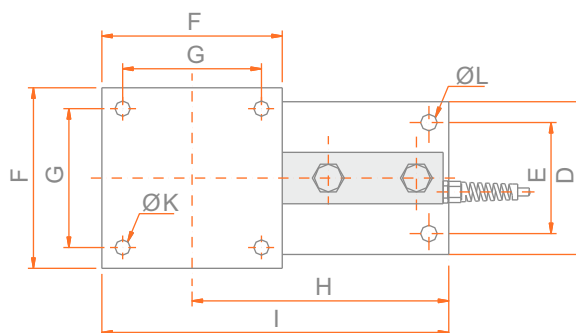
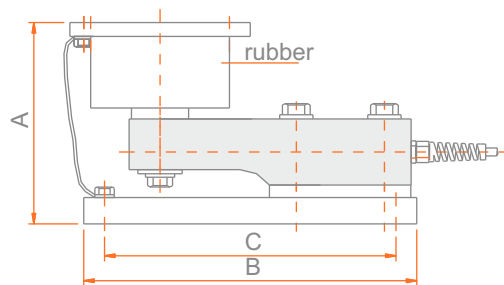
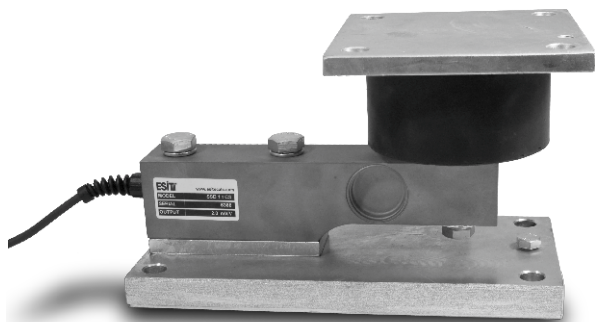
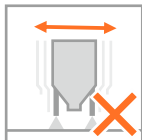


Type SSB-ELT



Elastomer Mounting Kit

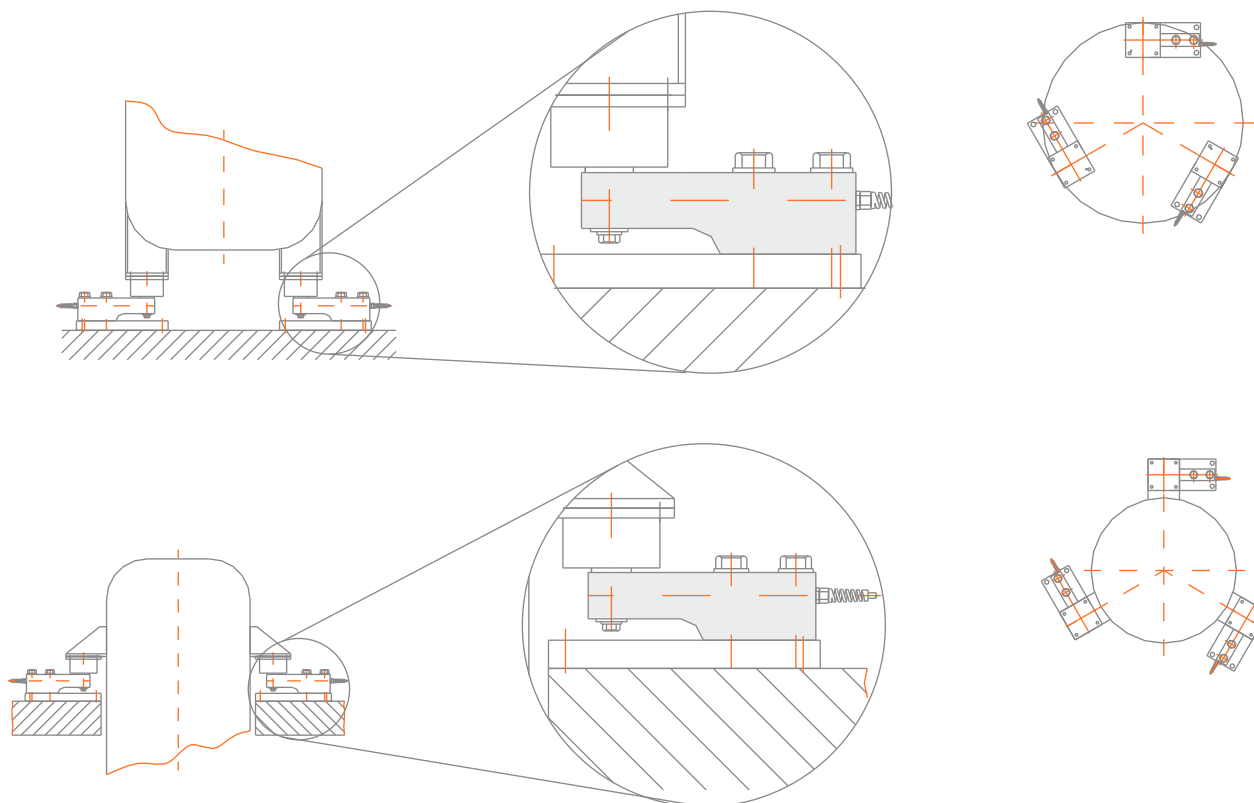
(All dimensions are expressed in millimeters)



- Maintains a stable measurement in weighing systems where vibrations and impact loads are present
- Protects the load cell against leakage currents with a grounding cable
- Eliminates problems arising from thermal expansion
- Protects the load cell against impact loads
- Also available in stainless steel

Capacity (kg)	A	B	C	D	E	F	G	H	I	K	L
1000-2000	145	240	210	110	80	130	100	185	250	13	13
5000	165	280	245	130	95	130	100	215	280	13	18
10000	200	330	290	150	110	225	180	255	367.5	18	26

Application Graphic



Esit reserves the right to modify, without prior notice, the products in accordance with technological developments.

