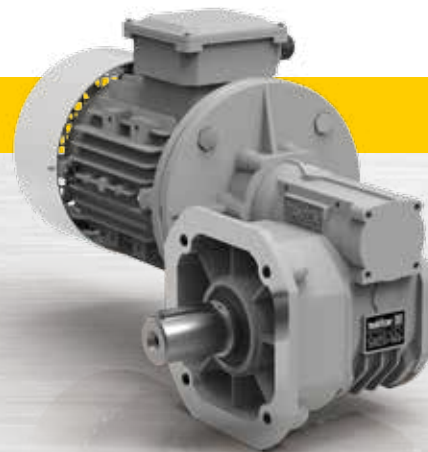
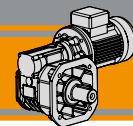


Poultry&Pig  **Tecno**
The gearmotors for farm equipment

Motoriduttori a vite senza fine
Wormgearmotors

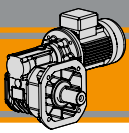




| Indice | Index | Inhaltsverzeichnis | Índice | Índice | 索引 | Pagina Page Seite Página Pagina 页 |
|-----------------------|---------------------------------|---------------------------|---------------------------------|-------------------------|--------------|--|
| Descrizione | <i>Description</i> | Beschreibung | <i>Descripción</i> | Descrição | 介绍 | B2 |
| Designazione | <i>Classification</i> | Klassifikation | <i>Clasificación</i> | Designação | 选型 | B3 |
| Simbologia | <i>Symbols</i> | Symbole | <i>Simbología</i> | Simbologia | 代号说明 | B4 |
| Lubrificazione | <i>Lubrication</i> | Schmierung | <i>Lubricación</i> | Lubrificação | 润滑油 | B4 |
| Dati Tecnici 50 Hz | <i>Technical data 50 Hz</i> | Technische Daten 50 Hz | <i>Datos técnicos 50 Hz</i> | Dados Tecnicos 50 Hz | 技术参数 50Hz | B5 |
| Dati Tecnici 60 Hz | <i>Technical data 60 Hz</i> | Technische Daten 60 Hz | <i>Datos técnicos 60 Hz</i> | Dados Tecnicos 60 Hz | 技术参数 60Hz | B6 |
| Motori Applicabili | <i>IEC Motor adapters</i> | IEC Motoradapter | <i>Motores aplicables</i> | Motores aplicáveis | IEC电机适配法兰 | B7 |
| Dimensioni | <i>Dimensions</i> | Abmessungen | <i>Dimensiones</i> | Dimensões | 尺寸规格 | B8 |

Questa sezione annulla e sostituisce ogni precedente edizione o revisione. Qualora questa sezione non Vi sia giunta in distribuzione controllata, l'aggiornamento dei dati ivi contenuto non è assicurato. **In tal caso la versione più aggiornata è disponibile sul nostro sito internet www.transtecno.com**

This section replaces any previous edition and revision. If you obtained this catalogue other than through controlled distribution channels, the most up to date content is not guaranteed. In this case the latest version is available on our web site www.transtecno.com



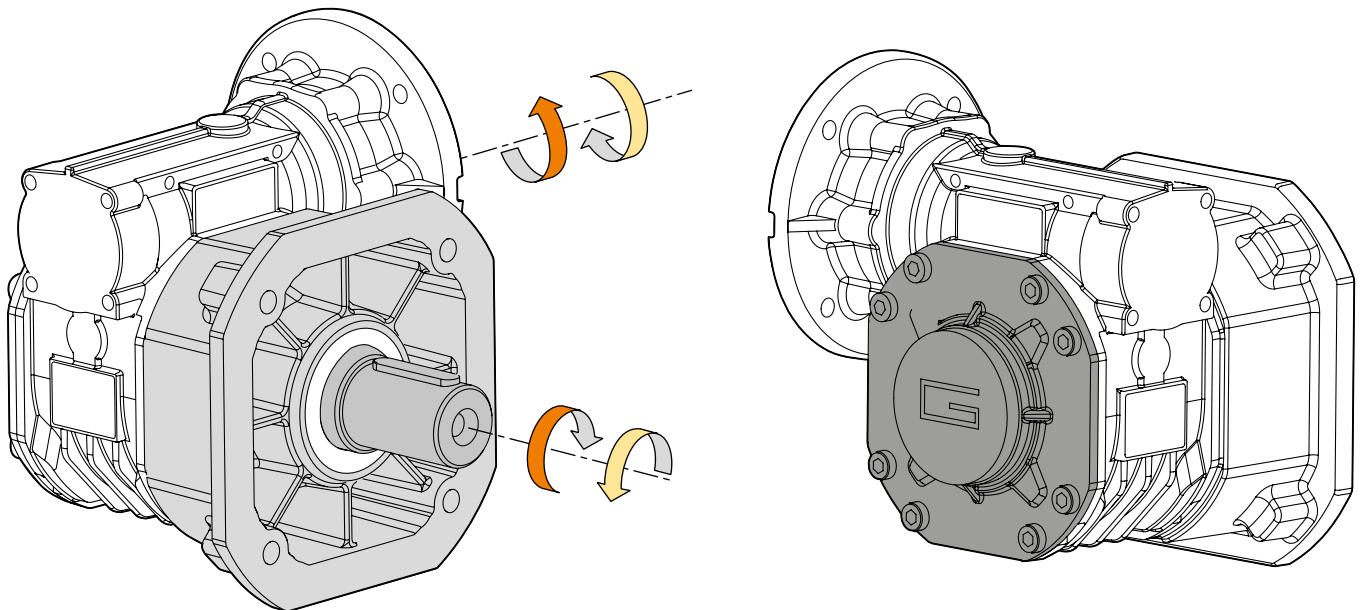
POK

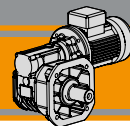
Motoriduttori a vite senza fine Wormgearmotors

| Descrizione | Description | Beschreibung | Descripción | Descrição | 介绍 |
|---|---|--|---|--|--|
| <p>I motoriduttori POK sono stati pensati per le linee di alimentazione negli allevamenti. Sono motoriduttori a vite senza fine progettati per fissaggio universale.</p> | <p>POK gearmotors have been designed for live-stock feeding lines. They are wormgear-motors designed for universal fixing.</p> | <p>Die POK Getriebemotoren sind für Fütterungsanlagen im Mastbetrieb konzipiert. Sie sind Schneckengetriebemotoren für Universalmontage.</p> | <p>Los motorreductores de la serie POK han sido pensados para las líneas de alimentación en las granjas. Son motorreductores de visinfín construidos con fijación universal.</p> | <p>Os motoredutores POK foram pensados para as linhas de alimentação nas criações de animais. São motoredutores de rosca sem fim projetados para uma fixação universal.</p> | <p>POK减速机运用在家畜喂养线上。POK产品属于蜗轮蜗杆减速电机，可普遍安装。</p> |
| <p>Le principali caratteristiche sono:</p> <ul style="list-style-type: none"> • carcassa in alluminio • flangia uscita personalizzabile e integrale, fissaggio direttamente alla cassa per una maggiore sopportazione dei carichi • albero uscita integrale personalizzabile per una maggiore resistenza ai carichi • lubrificazione a vita • coperchio chiuso in pressofusione di alluminio | <p>The main features are:</p> <ul style="list-style-type: none"> • aluminium housing • customisable integral output flange, fixed directly to the housing, to withstand higher loads • customisable integral output shaft for greater load-bearing capacity • long-life lubrication • die-cast aluminium cover | <p>Die Hauptmerkmale sind:</p> <ul style="list-style-type: none"> • Aluminiumgehäuse • Integrierte, anpassbare Abtriebsflansch. Anbau direkt am Gehäuse für größere Belastungen. • Integrierte, anpassbare Ausgangswelle für größere Belastungen. • Lebensdauer-schmierung • Aluminiumdruckgussdeckel | <p>Las características principales son:</p> <ul style="list-style-type: none"> • Carcasa en aluminio • Brida de salida personalizable y solidaria, fijada directamente a la carcasa para soportar mejor las cargas • Eje de salida personalizable y solidario, para una mayor resistencia a las cargas • Lubricación permanente • Tapa de protección en aluminio | <p>As principais características são:</p> <ul style="list-style-type: none"> • Carcaça de alumínio • Flange de saída personalizável e integral, fixação diretamente na carcaça para suportar mais ascargas • Eixo de saída personalizável e integral para uma maior solicitação das cargas • Lubrificação permanente • Tampa em pressofusão de alumínio | <p>产品主要特点:</p> <ul style="list-style-type: none"> • 铝壳箱体 • 可按客户要求定制整体输出法兰，直接安装于箱体上，可承受更高负载。 • 若需更大承载能力，可按客户需求定制整体输出轴 • 长寿命合成油 • 压铸铝合金箱体 |

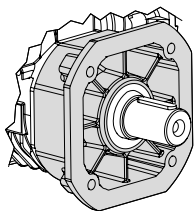
Flange d'entrata - Input flanges - Antriebsflansche - Bridas de entrada - Flange de entrada - 输入法兰
Sensi di rotazione - Direction of rotation - Drehrichtung - Sentido de rotación - Sentido de rotação - 运转方向

IEC 71B5
 IEC 80B5/B14
 IEC 90B5/B14
 IEC 100B5/B14
 IEC 112B5/B14

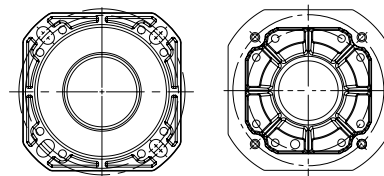




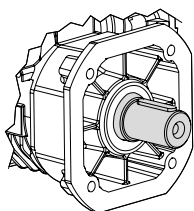
Flange d'uscita - Output flanges - Abtriebsflansche - Bidas de salida - Flange de saída - 输出法兰



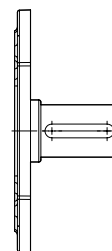
Realizzate a richiesta del cliente
Customizable upon request
Kundenanpassung auf Anfrage
Personalizable bajo petición del cliente
Projetada em base à necessidade do cliente
可按客户要求定制



Alberi d'uscita - Output shafts - Abtriebswellen - Ejes de salida - Eixo de saída - 输出轴




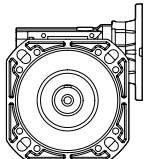
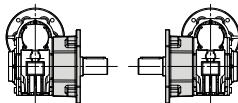
Realizzati a richiesta del cliente
Customizable upon request
Kundenanpassung auf Anfrage
Personalizable bajo petición del cliente
Projetada em base à necessidade do cliente
可按客户要求定制



POK

Designazione Classification Klassifikation Clasificación Designação 选型

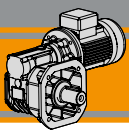
Riduttore / Gearbox / Getriebe / Reductor / Redutores / 减速机

| POK | 150 | FD | 10 | 71 | B5 |
|---|---|---|---|--|---|
| Tipo Type Tip Tipo Tipo 种类 | Grandezza Size Größe Tamaño Tamanho 型号 | Versione riduttore Gearbox version Getriebeversion Versión reductor Versão reductor 置式 | Rapporto Ratio Übersetzung Relación de reducción Redução 速比 | IEC  71.. — 112.. | Forma costruttiva Version Bauform Forma Constructiva Forma Constructiva 型号 |
|  | 150 220 | FD FS  | Vedi tabelle See tables Siehe Tabellen Vease tablas Ver tabela 见表格 | | B5 B14 |

Motore / Motor / Motor / Motor / Motor / 电机

| 0.75kW | 4p | 3ph | 230/400V | 50Hz | T1 |
|---|---|--|--|--|---|
| Potenza Power Leistung Potencia Potência 功率 | Poli Poles Pole Polos Polos 极数 | Fasi Phases Phasen Fases Fases 相数 | Tensione Voltage Spannung Tensión Tensão 电压 | Frequenza Frequency Frequenz Frecuencia Frequência 频率 | Pos. morsettiera Terminal box pos. Position Klemmenkasten Posición Caja de Bornes Posição Bloco terminal 接线盒位置 |
| Vedi tabelle See tables Siehe Tabellen Vease tablas Ver tabela 见表格 | 2p 4p 6p 8p | 1ph 3ph | 230/400V 220/380V ... 230V ... | 50Hz 60Hz | T1 (Std)  T4 T2 T3 |





| Simbologia | Symbols | Symbole | Simbología | Simbologia | 代号说明 | |
|----------------------------|---|--|---|--|---|----------------------|
| n_1 [min ⁻¹] | Velocità in ingresso | <i>Input speed</i> | Eingangsdrehzahl | <i>Velocidad de entrada</i> | Velocidade de entrada | 输入转速 |
| n_2 [min ⁻¹] | Velocità in uscita | <i>Output speed</i> | Ausgangsdrehzahl | <i>Velocidad de salida</i> | Velocidade de saída | 输出转速 |
| i | Rapporto di riduzione | <i>Ratio</i> | Übersetzung | <i>Relación de reducción</i> | Relação de redução | 速比 |
| P_1 [kW] | Potenza in ingresso | <i>Input power</i> | Eingangsleistung | <i>Potencia en entrada</i> | Potência de entrada | 输入功率 |
| P_{n1} [kW] | Potenza nominale in entrata | <i>Nominal input power</i> | Nenn-Eingangsleistung | <i>Potencia nominal de entrada</i> | Potência nominal na entrada | 额定输入功率 |
| M_2 [Nm] | Coppia nominale | <i>Nominal torque</i> | Nennmoment | <i>Par nominal</i> | Torque | 额定扭矩 |
| M_{n2} [Nm] | Coppia nominale in uscita in funzione di P_{n1} | <i>Nominal output torque referred to P_{n1}</i> | NennAusgangsdrehmoment in Abhängigkeit von P_{n1} | <i>Par nominal de salida en función de P_{n1}</i> | Torque nominal na saída em função de P_{n1} | 额定输出扭矩 见 P_{n1} |
| sf | Fattore di servizio | <i>Service factor</i> | Servicefaktor | <i>Factor de servicio</i> | Fator de serviço | 使用系数 |
| R_d [%] | Rendimento dinamico | <i>Dynamic efficiency</i> | Dynamischer Wirkungsgrad | <i>Rendimiento dinámico</i> | Rendimento dinâmico | /动态效率 |
| R_s [%] | Rendimento statico | <i>Static efficiency</i> | Statischer Wirkungsgrad | <i>Rendimiento estático</i> | Rendimento estático | 静态效率 |
| R_2 [N] | Carico radiale ammissibile in uscita | <i>Permitted output radial load</i> | Zulässige radiale Belastung | <i>Carga radial permitida en salida</i> | Carga radial admissível na saída | 输出径向负荷 |

| Lubrificazione | Lubrication | Schmierung | Lubricación | Lubrificação | 润滑油 |
|----------------|-------------|------------|-------------|--------------|-----|
|----------------|-------------|------------|-------------|--------------|-----|

I motoriduttori POK sono forniti completi di lubrificante sintetico viscosità 320 e non necessitano di manutenzione.

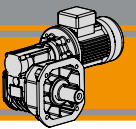
Permanent synthetic oil long-life lubrication (viscosity grade 320) on POK gearmotors.

Dauerschmierung mit Long-life Synthetiköl (Viskositätsgrad 320) für Getriebemotoren POK.


Los motorreductores POK se proporcionan completos de lubricante sintético viscosidad 320 y no necesitan mantenimiento.

Os motoredutores POK são fornecidos já com lubrificante sintético, com viscosidade de 320 não necessitando.

POK减速电机使用长寿命人工合成润滑油（粘度为320）。



[IEC - 50 Hz - n₁ 1400 min⁻¹]

| P ₁ [kW] | n ₂ [min ⁻¹] | M ₂ [Nm] | sf | i |  |  |
|------------------------|--|------------------------|----|---|---|---|
|------------------------|--|------------------------|----|---|---|---|

| P ₁ [kW] | n ₂ [min ⁻¹] | M ₂ [Nm] | sf | i |  |  |
|------------------------|--|------------------------|----|---|---|---|
|------------------------|--|------------------------|----|---|---|---|

0.55

| | | | | | | | |
|-----------------------------------|-----|-----|-----|----|--------|--------|----|
| 71C4 (1400 min ⁻¹) | 140 | 33 | 6.7 | 10 | POK150 | B5 | |
| | 93 | 48 | 4.6 | 15 | | B5 | |
| | 70 | 61 | 3.3 | 20 | | B5 | |
| | 56 | 75 | 2.4 | 25 | | B5 | |
| | 47 | 85 | 2.8 | 30 | | B5 | |
| | 35 | 108 | 1.9 | 40 | | B5 | |
| | 28 | 128 | 1.5 | 50 | | B5 | |
| | 23 | 146 | 1.2 | 60 | | B5 | |
| | 47 | 89 | 4.7 | 30 | | POK220 | B5 |
| | 35 | 114 | 3.3 | 40 | | | B5 |
| 28 | 135 | 2.4 | 50 | B5 | | | |
| 23 | 155 | 2.0 | 60 | B5 | | | |

1.1

| | | | | | | | |
|---|-----|-----|-----|--------|--------|--------|--------|
| 80C4 90S4 (1400 min ⁻¹) | 140 | 66 | 3.3 | 10 | POK150 | B5/B14 | |
| | 93 | 95 | 2.3 | 15 | | B5/B14 | |
| | 70 | 123 | 1.6 | 20 | | B5/B14 | |
| | 56 | 149 | 1.2 | 25 | | B5/B14 | |
| | 47 | 171 | 1.4 | 30 | | B5/B14 | |
| | 35 | 216 | 1.0 | 40 | | B5/B14 | |
| | 93 | 97 | 3.8 | 15 | | POK220 | B5/B14 |
| | 70 | 126 | 2.8 | 20 | | | B5/B14 |
| | 56 | 156 | 2.0 | 25 | | | B5/B14 |
| | 47 | 178 | 2.4 | 30 | | | B5/B14 |
| 35 | 228 | 1.6 | 40 | B5/B14 | | | |
| 28 | 270 | 1.2 | 50 | B5/B14 | | | |
| 23 | 311 | 1.0 | 60 | B5/B14 | | | |

| | | | | | | | |
|-----------------------------------|-----|-----|-----|--------|--------|--------|--------|
| 80A4 (1400 min ⁻¹) | 140 | 33 | 6.7 | 10 | POK150 | B5/B14 | |
| | 93 | 48 | 4.6 | 15 | | B5/B14 | |
| | 70 | 61 | 3.3 | 20 | | B5/B14 | |
| | 56 | 75 | 2.4 | 25 | | B5/B14 | |
| | 47 | 85 | 2.8 | 30 | | B5/B14 | |
| | 35 | 108 | 1.9 | 40 | | B5/B14 | |
| | 28 | 128 | 1.5 | 50 | | B5/B14 | |
| | 23 | 146 | 1.2 | 60 | | B5/B14 | |
| | 47 | 89 | 4.7 | 30 | | POK220 | B5/B14 |
| | 35 | 114 | 3.3 | 40 | | | B5/B14 |
| 28 | 135 | 2.4 | 50 | B5/B14 | | | |
| 23 | 155 | 2.0 | 60 | B5/B14 | | | |

1.5

| | | | | | | | |
|-----------------------------------|-----|-----|-----|--------|--------|--------|--------|
| 90L4 (1400 min ⁻¹) | 140 | 89 | 2.4 | 10 | POK150 | B5/B14 | |
| | 93 | 130 | 1.7 | 15 | | B5/B14 | |
| | 70 | 168 | 1.2 | 20 | | B5/B14 | |
| | 56 | 204 | 0.9 | 25 | | B5/B14 | |
| | 47 | 233 | 1.0 | 30 | | B5/B14 | |
| | 35 | 295 | 0.8 | 40 | | B5/B14 | |
| | 140 | 91 | 3.6 | 10 | | POK220 | B5/B14 |
| | 93 | 132 | 2.8 | 15 | | | B5/B14 |
| | 70 | 172 | 2.1 | 20 | | | B5/B14 |
| | 56 | 212 | 1.5 | 25 | | | B5/B14 |
| 47 | 243 | 1.7 | 30 | B5/B14 | | | |
| 35 | 311 | 1.2 | 40 | B5/B14 | | | |
| 28 | 368 | 0.9 | 50 | B5/B14 | | | |

0.75

| | | | | | | | |
|-----------------------------------|-----|-----|-----|----|--------|--------|----|
| 71D4 (1400 min ⁻¹) | 140 | 45 | 4.9 | 10 | POK150 | B5 | |
| | 93 | 65 | 3.4 | 15 | | B5 | |
| | 70 | 84 | 2.4 | 20 | | B5 | |
| | 56 | 102 | 1.8 | 25 | | B5 | |
| | 47 | 117 | 2.1 | 30 | | B5 | |
| | 35 | 147 | 1.4 | 40 | | B5 | |
| | 28 | 174 | 1.1 | 50 | | B5 | |
| | 23 | 200 | 0.9 | 60 | | B5 | |
| | 70 | 86 | 4.1 | 20 | | POK220 | B5 |
| | 56 | 106 | 3.0 | 25 | | | B5 |
| 47 | 121 | 3.5 | 30 | B5 | | | |
| 35 | 156 | 2.4 | 40 | B5 | | | |
| 28 | 184 | 1.8 | 50 | B5 | | | |
| 23 | 212 | 1.4 | 60 | B5 | | | |

2.2

| | | | | | | | |
|--|-----|-----|-----|----|--------|--------|--------|
| 90LB4 100LA4 (1400 min ⁻¹) | 140 | 131 | 1.7 | 10 | POK150 | B5/B14 | |
| | 93 | 190 | 1.2 | 15 | | B5/B14 | |
| | 70 | 246 | 0.8 | 20 | | B5/B14 | |
| | 140 | 134 | 2.5 | 10 | | POK220 | B5/B14 |
| | 93 | 194 | 1.9 | 15 | | | B5/B14 |
| | 70 | 252 | 1.4 | 20 | | | B5/B14 |
| | 56 | 311 | 1.0 | 25 | | | B5/B14 |
| | 47 | 356 | 1.2 | 30 | | | B5/B14 |
| | 35 | 456 | 0.8 | 40 | | | B5/B14 |

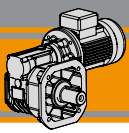
| | | | | | | | |
|-----------------------------------|-----|-----|-----|--------|--------|--------|--------|
| 80B4 (1400 min ⁻¹) | 140 | 45 | 4.9 | 10 | POK150 | B5/B14 | |
| | 93 | 65 | 3.4 | 15 | | B5/B14 | |
| | 70 | 84 | 2.4 | 20 | | B5/B14 | |
| | 56 | 102 | 1.8 | 25 | | B5/B14 | |
| | 47 | 117 | 2.1 | 30 | | B5/B14 | |
| | 35 | 147 | 1.4 | 40 | | B5/B14 | |
| | 28 | 174 | 1.1 | 50 | | B5/B14 | |
| | 23 | 200 | 0.9 | 60 | | B5/B14 | |
| | 70 | 86 | 4.1 | 20 | | POK220 | B5/B14 |
| | 56 | 106 | 3.0 | 25 | | | B5/B14 |
| 47 | 121 | 3.5 | 30 | B5/B14 | | | |
| 35 | 156 | 2.4 | 40 | B5/B14 | | | |
| 28 | 184 | 1.8 | 50 | B5/B14 | | | |
| 23 | 212 | 1.4 | 60 | B5/B14 | | | |

3





| | | | | | | | |
|-------------------------------------|-----|-----|-----|----|--------|--------|--------|
| 100LB4 (1400 min ⁻¹) | 140 | 179 | 1.2 | 10 | POK150 | B5/B14 | |
| | 93 | 259 | 0.9 | 15 | | B5/B14 | |
| | 140 | 182 | 1.8 | 10 | | POK220 | B5/B14 |
| | 93 | 264 | 1.4 | 15 | | | B5/B14 |
| | 70 | 344 | 1.0 | 20 | | | B5/B14 |
| | 56 | 425 | 0.8 | 25 | | | B5/B14 |
| | 47 | 485 | 0.9 | 30 | | | B5/B14 |

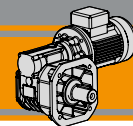
4

| | | | | | | |
|------------------------------------|-----|-----|-----|----|--------|--------|
| 112M4 (1400 min ⁻¹) | 140 | 238 | 0.9 | 10 | POK150 | B5/B14 |
| | 140 | 243 | 1.4 | 10 | POK220 | B5/B14 |
| | 93 | 352 | 1.1 | 15 | | B5/B14 |
| | 70 | 458 | 0.8 | 20 | | B5/B14 |



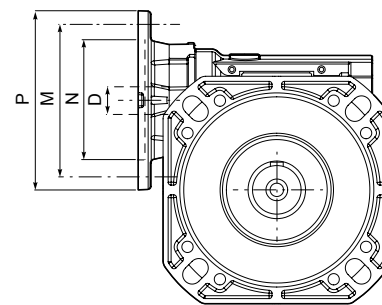
[IEC - 60 Hz - n₁ 1750 min⁻¹]

| P ₁ [kW] | n ₂ [min ⁻¹] | M ₂ [Nm] | sf | i |  |  | P ₁ [kW] | n ₂ [min ⁻¹] | M ₂ [Nm] | sf | i |  |  | | | | | | | | |
|-----------------------------------|--|------------------------|-----|--------|---|---|---------------------------|--|------------------------|--------|--------|---|---|--------|--------|--------|--------|--------|--------|--------|--------|
| 0.55 | | | | | | | 1.1 | | | | | | | | | | | | | | |
| 71C4 (1750 min ⁻¹) | 175 | 27 | 7.3 | 10 | POK150 | B5 | 80C4 | 175 | 53 | 3.6 | 10 | POK150 | B5/B14 | | | | | | | | |
| | 117 | 38 | 4.7 | 15 | | | 90S4 | 117 | 77 | 2.3 | 15 | | | | | | | | | | |
| | 88 | 50 | 3.7 | 20 | | | (1750 min ⁻¹) | B5 | 88 | 100 | 1.8 | | | 20 | B5/B14 | | | | | | |
| | 70 | 60 | 2.7 | 25 | | | | | 70 | 125 | 1.3 | | | 25 | | | | | | | |
| | 58 | 70 | 3.2 | 30 | | | | | 58 | 140 | 1.6 | | | 30 | | | | | | | |
| | 44 | 89 | 2.2 | 40 | | | | | 44 | 177 | 1.1 | | | 40 | | | | | | | |
| | 35 | 107 | 1.6 | 50 | | | | | POK220 | B5 | 117 | | | 77 | | 4.4 | 15 | B5/B14 | | | |
| | 29 | 124 | 1.3 | 60 | | | | | | | 88 | | | 101 | | 3.2 | 20 | | | | |
| | 44 | 92 | 3.7 | 40 | | | | | | | 70 | | | 126 | | 2.3 | 25 | | | | |
| | 35 | 111 | 2.7 | 50 | | | | | | | 58 | | | 144 | | 2.7 | 30 | | | | |
| 29 | 128 | 2.2 | 60 | 44 | 185 | 1.8 | 40 | | | | | | | | | | | | | | |
| 35 | 111 | 2.7 | 50 | 35 | 222 | 1.4 | 50 | | | | | | | | | | | | | | |
| 29 | 128 | 2.2 | 60 | 29 | 256 | 1.1 | 60 | | | | | | | | | | | | | | |
| 0.75 | | | | | | | 1.5 | | | | | | | | | | | | | | |
| 80A4 (1750 min ⁻¹) | 175 | 27 | 7.3 | 10 | POK150 | B5/B14 | 90L4 | 175 | 72 | 2.7 | 10 | POK150 | B5/B14 | | | | | | | | |
| | 117 | 38 | 4.7 | 15 | | | 117 | 105 | 1.7 | 15 | | | | | | | | | | | |
| | 88 | 50 | 3.7 | 20 | | | (1750 min ⁻¹) | B5/B14 | 88 | 137 | 1.3 | | | 20 | B5/B14 | | | | | | |
| | 70 | 60 | 2.7 | 25 | | | | | 70 | 171 | 1.0 | | | 25 | | | | | | | |
| | 58 | 70 | 3.2 | 30 | | | | | 58 | 191 | 1.2 | | | 30 | | | | | | | |
| | 44 | 89 | 2.2 | 40 | | | | | 44 | 242 | 0.8 | | | 40 | | | | | | | |
| | 35 | 107 | 1.6 | 50 | | | | | POK220 | B5/B14 | 175 | | | 73 | | 4.1 | 10 | B5/B14 | | | |
| | 29 | 124 | 1.3 | 60 | | | | | | | 117 | | | 106 | | 3.2 | 15 | | | | |
| | 44 | 92 | 3.7 | 40 | | | | | | | 88 | | | 138 | | 2.3 | 20 | | | | |
| | 35 | 111 | 2.7 | 50 | | | | | | | 70 | | | 172 | | 1.7 | 25 | | | | |
| 29 | 128 | 2.2 | 60 | 58 | 196 | 2.0 | 30 | | | | | | | | | | | | | | |
| 35 | 111 | 2.7 | 50 | 44 | 252 | 1.4 | 40 | | | | | | | | | | | | | | |
| 29 | 128 | 2.2 | 60 | 35 | 303 | 1.0 | 50 | | | | | | | | | | | | | | |
| 1.1 | | | | | | | 2.2 | | | | | | | | | | | | | | |
| 71D4 (1750 min ⁻¹) | 175 | 36 | 5.3 | 10 | POK150 | B5 | 90LB4 | 175 | 106 | 1.8 | 10 | POK150 | B5/B14 | | | | | | | | |
| | 117 | 52 | 3.4 | 15 | | | 100LA4 | 117 | 154 | 1.2 | 15 | | | | | | | | | | |
| | 88 | 68 | 2.7 | 20 | | | (1750 min ⁻¹) | B5 | 88 | 201 | 0.9 | | | 20 | B5/B14 | | | | | | |
| | 70 | 85 | 1.9 | 25 | | | | | POK220 | B5 | 175 | | | 107 | | 2.8 | 10 | B5/B14 | | | |
| | 58 | 95 | 2.3 | 30 | | | | | | | 117 | | | 155 | | 2.2 | 15 | | | | |
| | 44 | 121 | 1.6 | 40 | | | | | | | 88 | | | 202 | | 1.6 | 20 | | | | |
| | 35 | 145 | 1.2 | 50 | | | | | | | 70 | | | 252 | | 1.2 | 25 | | | | |
| | 29 | 170 | 1.0 | 60 | | | | | 58 | 288 | 1.4 | | | 30 | | | | | | | |
| | 88 | 69 | 4.7 | 20 | | | | | POK220 | B5 | 44 | | | 370 | | 0.9 | 40 | B5/B14 | | | |
| | 70 | 86 | 3.4 | 25 | | | | | | | 117 | | | 155 | | 2.2 | 15 | | | | |
| 58 | 98 | 4.0 | 30 | 88 | 202 | 1.6 | 20 | | | | | | | | | | | | | | |
| 44 | 126 | 2.7 | 40 | 70 | 252 | 1.2 | 25 | | | | | | | | | | | | | | |
| 35 | 151 | 2.0 | 50 | 58 | 288 | 1.4 | 30 | | | | | | | | | | | | | | |
| 29 | 174 | 1.6 | 60 | 44 | 370 | 0.9 | 40 | | | | | | | | | | | | | | |
| 1.5 | | | | | | | 3 | | | | | | | | | | | | | | |
| 80B4 (1750 min ⁻¹) | 175 | 36 | 5.3 | 10 | POK150 | B5/B14 | 100LB4 | 175 | 145 | 1.3 | 10 | POK150 | B5/B14 | | | | | | | | |
| | 117 | 52 | 3.4 | 15 | | | 117 | 210 | 0.9 | 15 | | | | | | | | | | | |
| | 88 | 68 | 2.7 | 20 | | | (1750 min ⁻¹) | B5/B14 | POK220 | B5 | 175 | | | 146 | 2.1 | 10 | B5/B14 | | | | |
| | 70 | 85 | 1.9 | 25 | | | | | | | 117 | | | 211 | 1.6 | 15 | | | | | |
| | 58 | 95 | 2.3 | 30 | | | | | | | 88 | | | 275 | 1.2 | 20 | | | | | |
| | 44 | 121 | 1.6 | 40 | | | | | | | 70 | | | 344 | 0.8 | 25 | | | | | |
| | 35 | 145 | 1.2 | 50 | | | | | 58 | 393 | 1.0 | | | 30 | | | | | | | |
| | 29 | 170 | 1.0 | 60 | | | | | POK220 | B5/B14 | POK220 | | | B5/B14 | 117 | 211 | 1.6 | 15 | B5/B14 | | |
| | 88 | 69 | 4.7 | 20 | | | | | | | | | | | 88 | 275 | 1.2 | 20 | | | |
| | 70 | 86 | 3.4 | 25 | | | | | | | | | | | 70 | 344 | 0.8 | 25 | | | |
| 58 | 98 | 4.0 | 30 | 58 | 393 | 1.0 | 30 | | | | | | | | | | | | | | |
| 44 | 126 | 2.7 | 40 | POK220 | B5/B14 | POK220 | B5/B14 | 117 | | | | 282 | 1.2 | | 15 | B5/B14 | | | | | |
| 35 | 151 | 2.0 | 50 | | | | | 88 | | | | 367 | 0.9 | | 20 | | | | | | |
| 29 | 174 | 1.6 | 60 | 29 | 174 | 1.6 | 60 | | | | | | | | | | | | | | |
| 2.2 | | | | | | | 4 | | | | | | | | | | | | | | |
| 80B4 (1750 min ⁻¹) | 175 | 36 | 5.3 | 10 | POK150 | B5/B14 | 112M4 | 175 | 194 | 1.5 | 10 | POK220 | B5/B14 | | | | | | | | |
| | 117 | 52 | 3.4 | 15 | | | 117 | 282 | 1.2 | 15 | | | | | | | | | | | |
| | 88 | 68 | 2.7 | 20 | | | (1750 min ⁻¹) | B5/B14 | POK220 | B5/B14 | 88 | | | 367 | 0.9 | 20 | B5/B14 | | | | |
| | 70 | 85 | 1.9 | 25 | | | | | | | POK220 | | | B5/B14 | POK220 | B5/B14 | | POK220 | B5/B14 | POK220 | B5/B14 |
| | 58 | 95 | 2.3 | 30 | | | | | | | | | | | | | | | | | |
| | 44 | 121 | 1.6 | 40 | | | | | | | POK220 | | | B5/B14 | POK220 | B5/B14 | | POK220 | B5/B14 | POK220 | B5/B14 |
| | 35 | 145 | 1.2 | 50 | | | | | | | | | | | | | | | | | |
| | 29 | 170 | 1.0 | 60 | | | | | | | POK220 | | | B5/B14 | POK220 | B5/B14 | | POK220 | B5/B14 | POK220 | B5/B14 |
| | 88 | 69 | 4.7 | 20 | | | | | | | | | | | | | | | | | |
| | 70 | 86 | 3.4 | 25 | | | | | | | POK220 | | | B5/B14 | POK220 | B5/B14 | | POK220 | B5/B14 | POK220 | B5/B14 |
| 58 | 98 | 4.0 | 30 | POK220 | B5/B14 | POK220 | B5/B14 | POK220 | B5/B14 | POK220 | | B5/B14 | | | | | | | | | |
| 44 | 126 | 2.7 | 40 | | | | | | | | POK220 | | B5/B14 | POK220 | B5/B14 | POK220 | B5/B14 | POK220 | B5/B14 | | |
| 35 | 151 | 2.0 | 50 | POK220 | B5/B14 | POK220 | B5/B14 | POK220 | B5/B14 | POK220 | | B5/B14 | | | | | | | | | |
| 29 | 174 | 1.6 | 60 | | | | | | | | POK220 | | B5/B14 | POK220 | B5/B14 | POK220 | B5/B14 | POK220 | B5/B14 | | |



Motori applicabili IEC Motor adapters IEC Motoradapter Motores aplicables Motores aplicáveis IEC电机适配法兰

| | IEC | N | M | P | D | i | | | | | | | |
|--------|------------|-----|-----|-----|----|----|----|----|----|----|----|----|----|
| | | | | | | 10 | 15 | 20 | 25 | 30 | 40 | 50 | 60 |
| POK150 | 100/112B5 | 180 | 215 | 250 | 28 | | | | | | | | |
| | 100/112B14 | 110 | 130 | 160 | | | | | | | | | |
| | 90B5 | 130 | 165 | 200 | 24 | | | | | | | | |
| | 90B14 | 95 | 115 | 140 | | | | | | | | | |
| | 80B5 | 130 | 165 | 200 | 19 | | | | | | | | |
| | 80B14 | 80 | 100 | 120 | | | | | | | | | |
| | 71B5 | 110 | 130 | 160 | 14 | | | | | | | | |
| POK220 | 100/112B5 | 180 | 215 | 250 | 28 | | | | | | | | |
| | 100/112B14 | 110 | 130 | 160 | | | | | | | | | |
| | 90B5 | 130 | 165 | 200 | 24 | | | | | | | | |
| | 90B14 | 95 | 115 | 140 | | | | | | | | | |
| | 80B5 | 130 | 165 | 200 | 19 | | | | | | | | |
| | 80B14 | 80 | 100 | 120 | | | | | | | | | |
| | 71B5 | 110 | 130 | 160 | 14 | | | | | | | | |



POK

Nota: Le aree evidenziate in grigio indicano l'applicabilità della corrispondente grandezza motore.
Flange NEMA disponibili a richiesta.

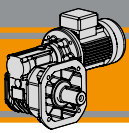
Note: Grey areas indicate motor inputs available on each size of unit.
NEMA flanges available on demand.

Hinweis: die grau markiert Bereiche zeigen die Anwendbarkeit der jeweiligen Motorgröße.
NEMA Flansche sind auf Anfrage erhältlich.

Nota: As áreas evidenciadas em cinza indicam a aplicabilidade da correspondente grandeza do motor.
Flange Nema disponível sob encomenda.

Note: Las áreas grises indican los tamaño de los motores aplicables.
Bridas NEMA están disponibles a petición.

注：灰色区域表示各个型号可用的电机输入。
如有需要，可使用NEMA法兰。

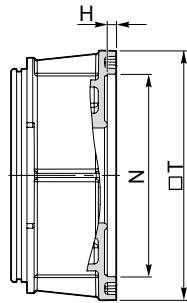
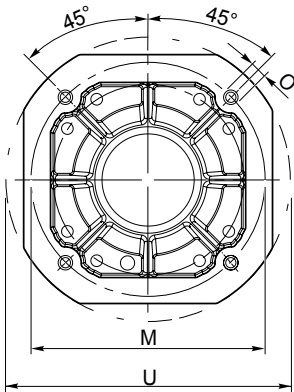
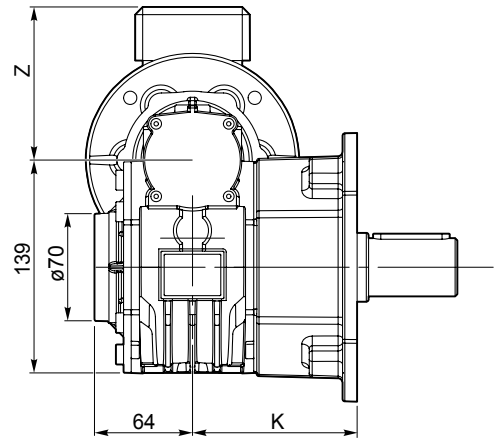
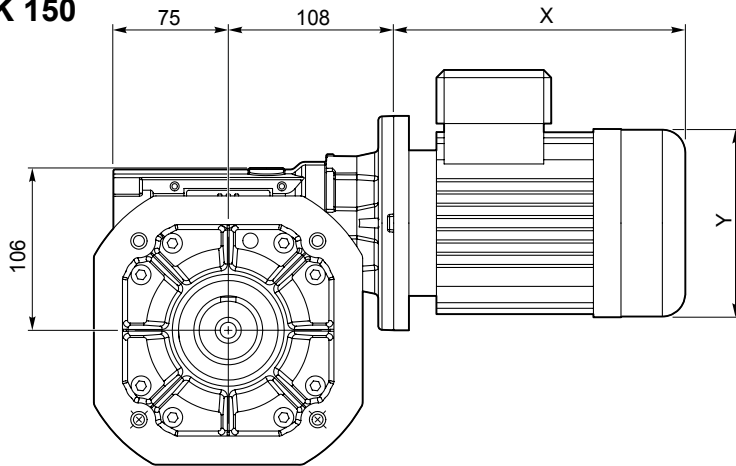


POK

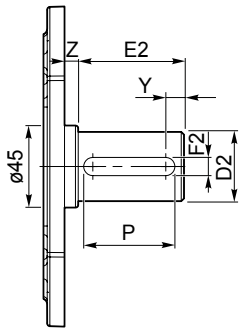
Motoriduttori a vite senza fine Wormgearmotors

Dimensioni Dimensions Abmessungen Dimensiones Dimensões 尺寸规格

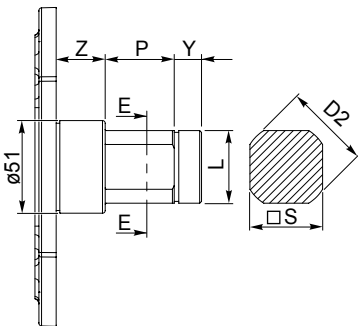
POK 150



| Dimensioni Dimensions Abmessungen Dimensiones Dimensões 尺寸规格 | | H | M | N f7 | O | K | T | U |
|---|-----|-----|------|---------|-------------|-----|------|--------|
| POK150 | F1 | - | ø165 | - | N° 4 M12x24 | 115 | □175 | ø200.5 |
| | ... | ... | ... | ... | ... | ... | ... | ... |



| Dimensioni Dimensions Abmessungen Dimensiones Dimensões 尺寸规格 | | D2 | E2 | Y | F2 | P | Z |
|---|-----|-----|-----|-----|-----|-----|-----|
| POK150 | S1 | ø38 | 58 | 10 | 10 | 50 | 7.5 |
| | ... | ... | ... | ... | ... | ... | ... |



| Dimensioni Dimensions Abmessungen Dimensiones Dimensões 尺寸规格 | | D2 | Y | P | Z | L | S |
|---|-----|-----|-----|-----|-----|-----------|-----|
| POK150 | S2 | ø47 | 15 | 38 | 30 | 1 1/4 GAS | □40 |
| | ... | ... | ... | ... | ... | ... | ... |

Nota: Alberi e flange non in tabella eseguibili a richiesta. Per informazioni sui carichi radiali contattare l'Ufficio Tecnico.

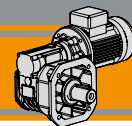
Note: Shafts and flanges not in table, customize on request. For information on radial loads please contact our Technical Assistance.

Anmerkung: Nicht in der Tabelle aufgeführte Wellen sind nach Kundenwunsch ausführbar. Für Informationen über die Radiallast, kontaktieren Sie bitte unsere technische Abteilung.

Nota: Ejes no incluidos en la tabla y realizables bajo pedido. Para obtener informaciones sobre las cargas radiales ponerse en contacto con el Departamento Técnico.

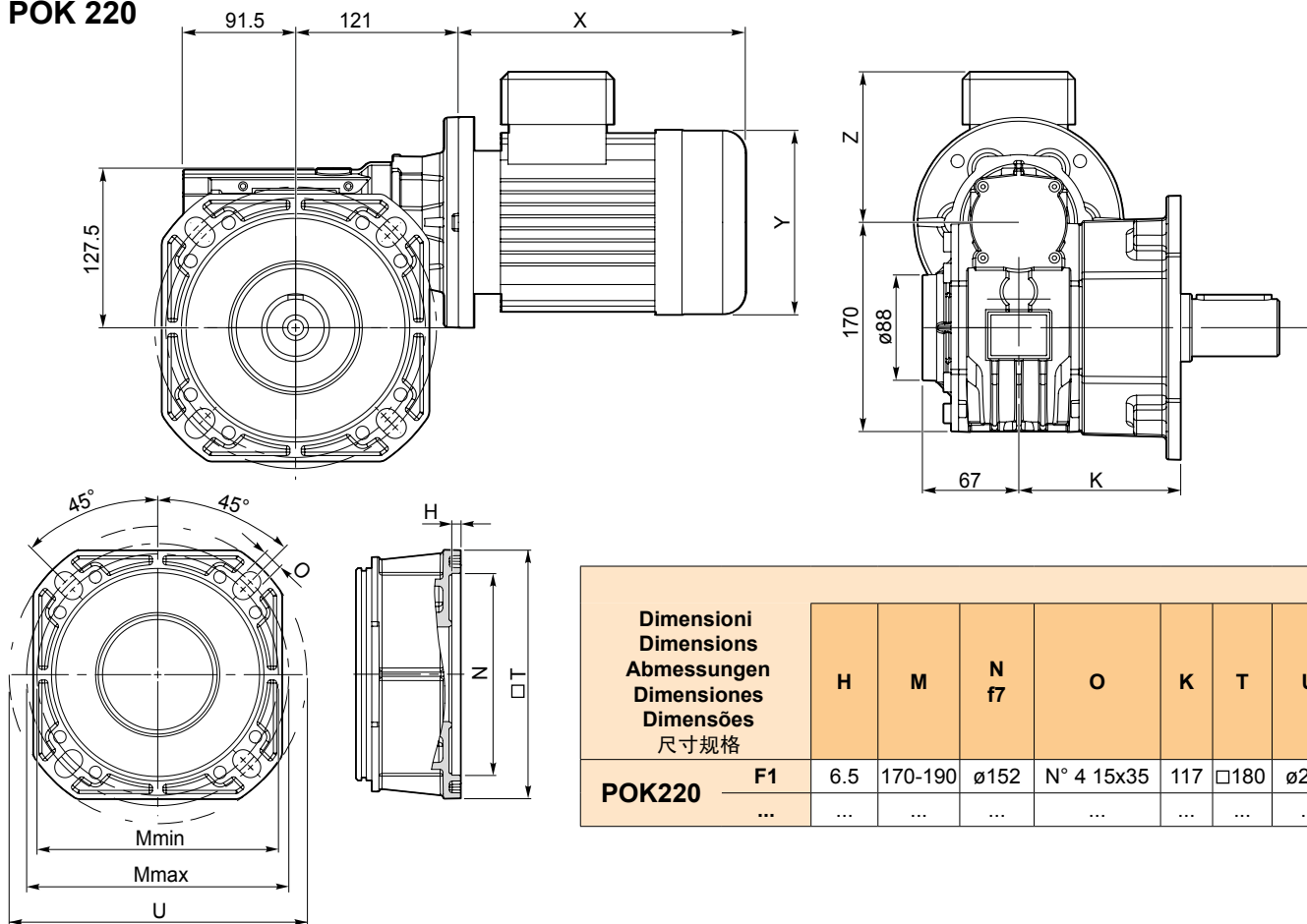
Nota: As eixos que não estão indicadas na tabela, estão disponíveis através de pedido. Para maiores informações sobre as cargas radiais, contate nosso escritório técnico

注解: 轴和法兰信息不在表格内, 如有客户需要, 可提供。有关径向负荷的信息, 请咨询我司技术部门。

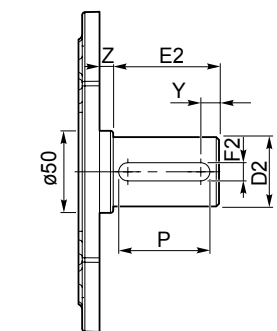


Dimensioni *Dimensions* Abmessungen *Dimensiones* Dimensões 尺寸规格

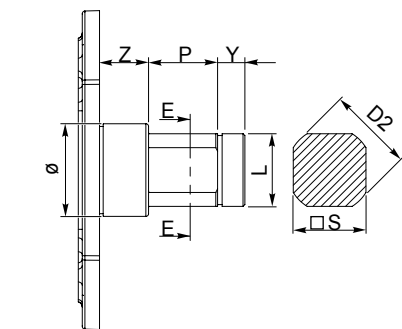
POK 220



| Dimensioni Dimensions Abmessungen Dimensiones Dimensões 尺寸规格 | | H | M | N f7 | O | K | T | U |
|---|-----|-----|---------|---------|------------|-----|------|------|
| POK220 | F1 | 6.5 | 170-190 | ø152 | N° 4 15x35 | 117 | □180 | ø215 |
| | ... | ... | ... | ... | ... | ... | ... | ... |



| Dimensioni Dimensions Abmessungen Dimensiones Dimensões 尺寸规格 | | D2 | E2 | Y | F2 | P | Z |
|---|-----|-----|-----|-----|-----|-----|-----|
| POK220 | S1 | ø35 | 60 | 10 | 10 | 50 | 6 |
| | ... | ... | ... | ... | ... | ... | ... |



| Dimensioni Dimensions Abmessungen Dimensiones Dimensões 尺寸规格 | | D2 | Y | P | Z | L | S |
|---|-----|-----|-----|-----|-----|-----|-----|
| POK220 | S2 | ... | ... | ... | ... | ... | ... |
| | ... | ... | ... | ... | ... | ... | ... |

Nota: Alberi e flange non in tabelle eseguibili a richiesta. Per informazioni sui carichi radiali contattare l'Ufficio Tecnico.

Note: Shafts and flanges not in table, customize on request. For information on radial loads please contact our Technical Assistance.

Anmerkung: Nicht in der Tabelle aufgeführte Wellen sind nach Kundenwunsch ausführbar. Für Informationen über die Radiallast, kontaktieren Sie bitte unsere technische Abteilung.

Nota: Ejes no incluidos en la tabla y realizables bajo pedido. Para obtener informaciones sobre las cargas radiales ponerse en contacto con el Departamento Técnico.

Nota: As eixos que não estão indicadas na tabela, estão disponíveis através de pedido. Para maiores informações sobre as cargas radiais, contate nosso escritório técnico

注解: 轴和法兰信息不在表格内, 如有客户需要, 可提供。有关径向负荷的信息, 请咨询我司技术部门。

POK

