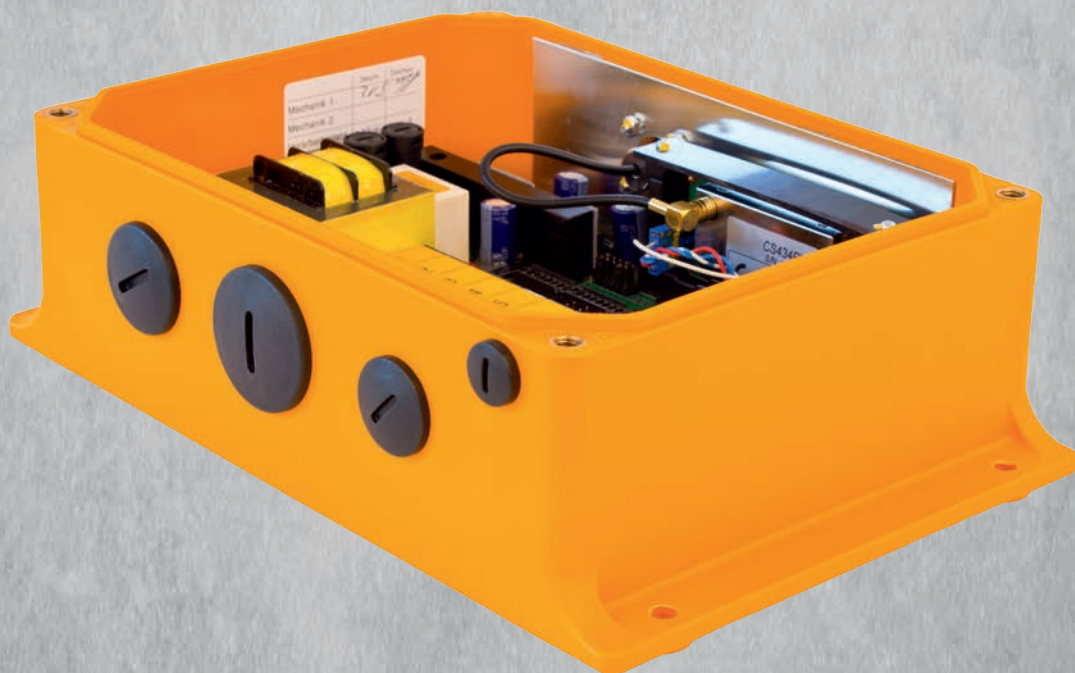


General Description

The RX 14+ is a standard receiver with 14 output relays. It can be equipped with twelve additional output relays or a module for proportional controls on demand.

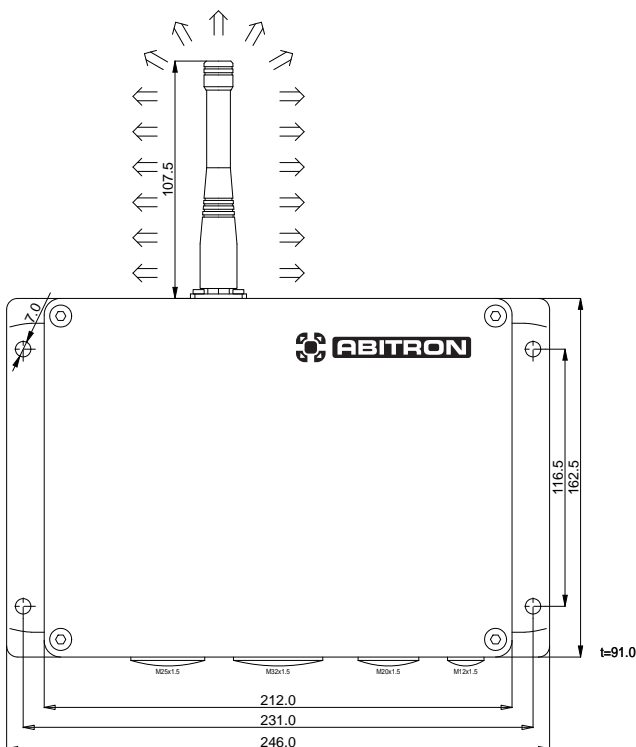
Due to the modular design it can easily and quickly be configured for many requirements of applications in industry and construction.



Technical Data

| | |
|--------------------------|--|
| Material | polyamide with glass fibre |
| Weight | < 1800 g |
| RF technology | synthesizer |
| Temperature range | -30 up to +70° C |
| Antenna | external or internal |
| Safety address | 20 bit (1 Mio.) |
| Protection type | IP 65 |
| Frequency range | 434/869 MHz (for EU, other frequencies on request) |
| Option | rubber buffers |
| Operating voltage | 8 - 30 VDC, 48 VAC, 120 VAC, 240 VAC |
| Outputs | 14 or 26 potential-free normally open contacts (8 A / 250 V) |

Installation



The antenna has to point vertically upwards!

The area around the antenna has to be free from obstacles!

Installation of the Receiver

Determine the receiver position and consider the following circumstances:

- The receiver is easily accessible but protected from loose and flying objects.
- The mounting surface provides space for 4 mounting holes.
- There is enough space for housing including antenna and connecting plugs.
- Mount the rubber buffers with the tightening torque of 2 nm maximum!

Dimensions in mm